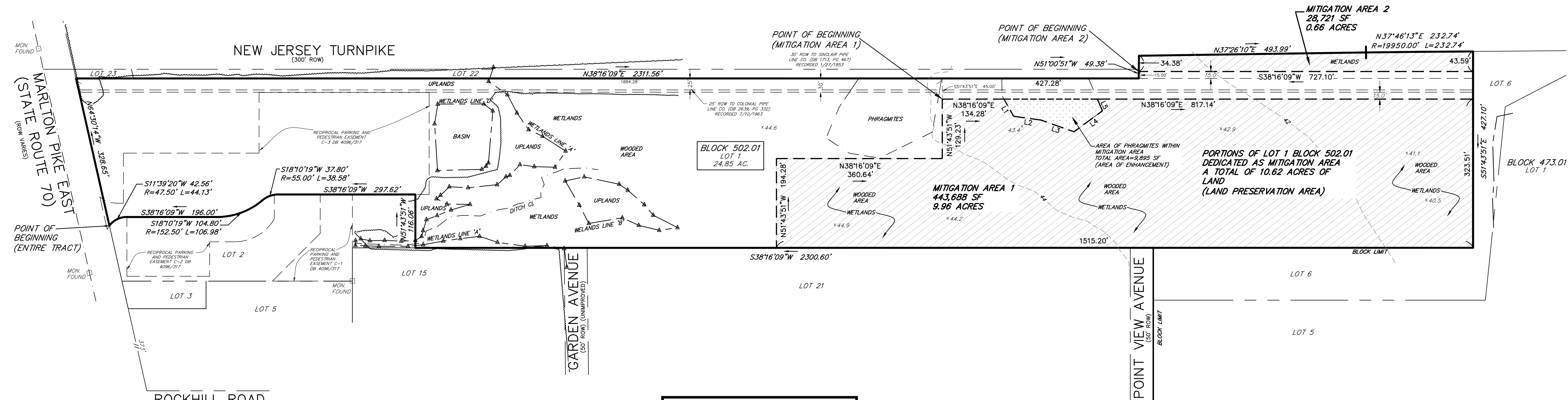
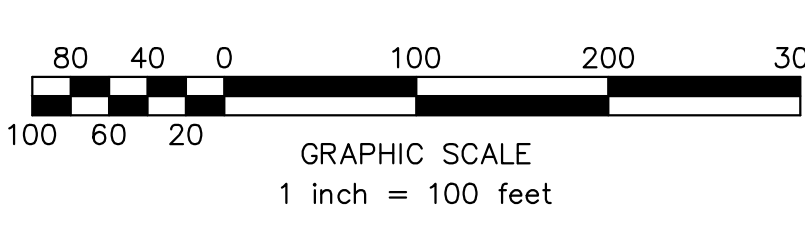


LOCATION MAP
MOORESTOWN NJ USGS QUAD MAP
SCALE: 1"=2000'

RELEASED BY:	SEW
CHECKED BY:	SEW
HORIZONTAL SCALE:	N/A
VERTICAL SCALE:	N/A
DATE:	04/19/17
PROJECT No.:	SJA-121
DRAWING NAME:	2017 Mitigation Site.dwg
DATE:	
REVISIONS:	
DRAWN BY:	JMA



L.1	S81°00'49"E	42.83'
L.2	N46°11'15"E	60.29'
L.3	N57°49'27"E	75.84'
L.4	N02°00'29"E	76.82'
L.5	N74°51'37"W	27.85'



SURVEY LEGEND

- IRON PIPE FOUND
- IRON PIN/CAPPED IRON PIN FOUND
- MONUMENT FOUND (FM)
- MONUMENT FOUND (NFM)
- DRILL HOLE FOUND
- WETLANDS MARKER
- WETLANDS LINE
- MITIGATION LINE
- LAND PRESERVATION AREA
- ENHANCEMENT AREA

MAP REFERENCES

1. BOUNDARY INFORMATION SHOWN BASED ON A MAP ENTITLED "BOUNDARY AND TOPOGRAPHIC SURVEY, BLOCK 502.01, LOT 1" PREPARED BY MIDATLANTIC ENGINEERING PARTNERS, LLC, DATED JUNE 8, 2012.

GENERAL NOTES

1. PROPERTY BEING KNOWN AND DESIGNATED AS BLOCK 502.01, LOT 1 AS SHOWN ON THE CURRENT TAX ASSESSMENT MAP OF THE TOWNSHIP OF CHERRY HILL, CAMDEN COUNTY, NEW JERSEY (SHEET 268).
2. ANY UTILITIES SHOWN HEREON ARE BASED ON ABOVE GROUND OBSERVATIONS. UTILITY MARKINGS FOUND IN THE FIELD, THE EXISTENCE AND/OR EXTENT OF THE UTILITIES CANNOT BE VERIFIED. OTHER UTILITIES MAY EXIST. ANY PERSON RELYING ON THIS INFORMATION MUST VERIFY INDEPENDENTLY THE LOCATION AND/OR EXISTENCE OF ANY AND ALL UTILITIES AFFECTING THE AREAS SHOWN HEREON. ALL CONTRACTORS MUST CALL THE NEW JERSEY ONE CALL SYSTEM (800-292-1000) IN ACCORDANCE WITH THE UNDERGROUND FACILITIES CONTROL ACT LAW PRIOR TO ANY SUBSURFACE ACTIVITY.
3. THIS PLAN HAS BEEN ROTATED TO THE NEW JERSEY STATE PLANE COORDINATE SYSTEM. BEARINGS SHOWN HEREON MAY NOT MATCH PREVIOUSLY RECORDED DEEDS OR MAPS.
4. THE VERTICAL DATUM IS THE NORTH AMERICAN VERTICAL DATUM OF 1988 (NAVD 1988).
5. IF THIS DOCUMENT DOES NOT CONTAIN THE RAISED SEAL OF THE UNDERSIGNED PROFESSIONAL, IT IS NOT A VALID COPY OF THE SURVEY AND NO LIABILITY IS ASSUMED FOR THE INFORMATION SHOWN HEREON.
7. WETLAND DELINEATION WAS PERFORMED BY MARATHON CONSULTANTS ON 08/12/2014 AND FIELD SURVEYED ON 10/06/2014.
8. FRESHWATER WETLANDS/WATERS BOUNDARY LINES SHOWN HEREON AS VERIFIED BY NJDEP ON OCTOBER 7, 2011, LOI FILE NO. 0409-11-0004.1 FHW10001.
9. AREA OF PHRAGMITES WITHIN MITIGATION AREA WAS FIELD SURVEYED BY MIDATLANTIC ENGINEERING PARTNERS, LLC ON MARCH 10, 2017.
10. CONTOURS AND SPOT ELEVATIONS SHOWN HEREON TAKEN FROM A PLAN ENTITLED, "WETLANDS LOCATION PLAN", PREPARED BY KERMAN CONSULTING ENGINEERS AND DATED AUGUST 8, 2011.

SITE MITIGATION AREA PLAN
BLOCK 502.01, LOT 1
TOWNSHIP OF CHERRY HILL, CAMDEN COUNTY, NEW JERSEY

[Signature]
Date: 4/19/17
Suzanne E. Warren, P.L.S.
PROFESSIONAL LAND SURVEYOR
N.J. Lic. No. C28189900

MidAtlantic
Engineering Partners, LLC
1000 N. 10th Street, Suite 200
Princeton, NJ 08540
Tel: 609-953-8800
Fax: 609-953-8801
www.midatlanticeng.com

Sheet Number
1 OF 1